



# Virginia Commons

3335 William Johnston Lane #11 Dumfries, Virginia 22026  
Phone 703.221.4838 Fax 703.221.6643 Website: www.virginiacommons.com

## Rental Prices and Leasing Requirements

UNIT TYPE	Monthly Rent	Minimum Income Requirement
<b>One Bedroom/One Full Bath</b> 780 – 950 sq ft <i>Standard/Deluxe Models</i>	\$1,165 - \$1,320	\$44,000.00
<b>Two Bedroom/Two Full Bath</b> 940 – 1,000 sq ft <i>Standard/Patio/Balcony/Foyer Models</i>	\$1,275 - \$1,410	\$50,000.00
<b>Three Bedroom/Two Full Bath</b> 1,070- 1,100 sq ft <i>Standard/Deluxe Models</i>	\$1,490 - \$1,585	\$56,000.00

**APPLICATION FEES:** The non-refundable application fee is payable by money order or personal check made out to Virginia Commons L.L.C. -- \$35.00 per applicant and \$60.00 for married couples. A \$250 non-refundable unit reservation fee is required for us to hold an apartment for you. When you sign a lease and move in, the unit reservation fee will be credited to your security deposit.

**SECURITY DEPOSIT:** Security deposits begin at **\$500.00** and may be higher depending on your credit.

**PREFERRED EMPLOYER PROGRAM:** Active U.S. Military, local law enforcement, PW County employees - Security Deposit can be as low as **\$250.00** depending on your credit.

**PET CHARGE:** Pets must be under 35 lbs. You must pay a non-refundable \$250.00 Pet Charge per animal as well as a \$25.00 monthly pet rent per animal. No “vicious” breed pets will be allowed. Maximum of 2 pets allowed provided their combined weight is under 55 lbs.

**LEASE TERMS:** Quoted Lease prices are for twelve (12) month leases. Six (6) month leases are available for an extra \$75.00 a month.

**UTILITIES INCLUDE:** Trash pickup. Tenant pays all other utilities – electric, water, phone and cable/fios. Units are all electric – no gas available.

**OCCUPANCY STANDARDS:** One Bedroom: maximum of 2 occupants; Two Bedrooms: maximum of 4 occupants; Three Bedrooms: maximum of 6 occupants.





# Virginia Commons



**ONE BEDROOM**  
770 square feet



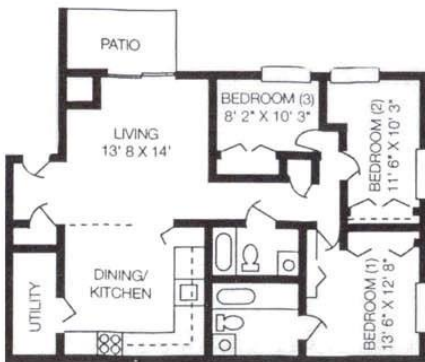
**ONE BEDROOM DELUXE**  
950 square feet



**TWO BEDROOM**  
940 - 1,000 square feet



**THREE BEDROOM**  
1,070 square feet



**THREE BEDROOM DELUXE**  
1,100 square feet

**Offering five different spacious floor plans to suit your every need.**